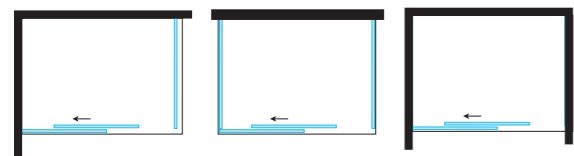


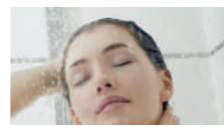
FPSC50

Porta scorrevole / Sliding door H 2000 mm

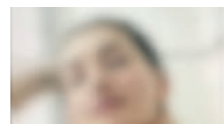


VERSIONE: ANGOLARE, CENTRO PARETE E NICCHIA

VERSION: CORNER, CENTER WALL AND NICHE



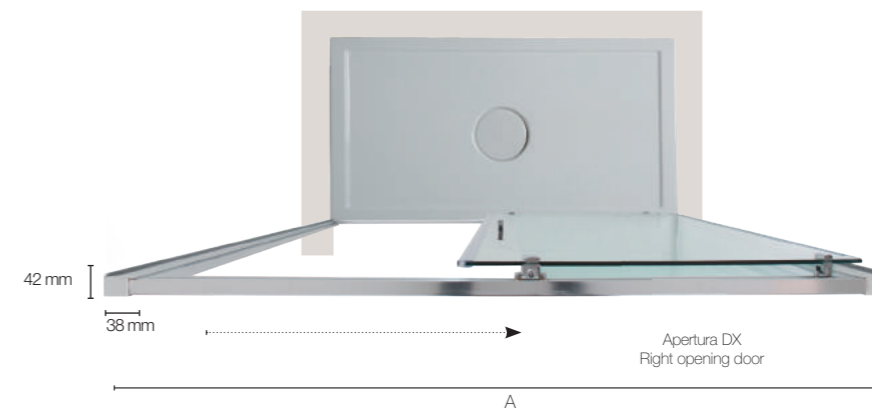
Cristallo trasparente
Transparent glass



Cristallo satinato
Frosted glass



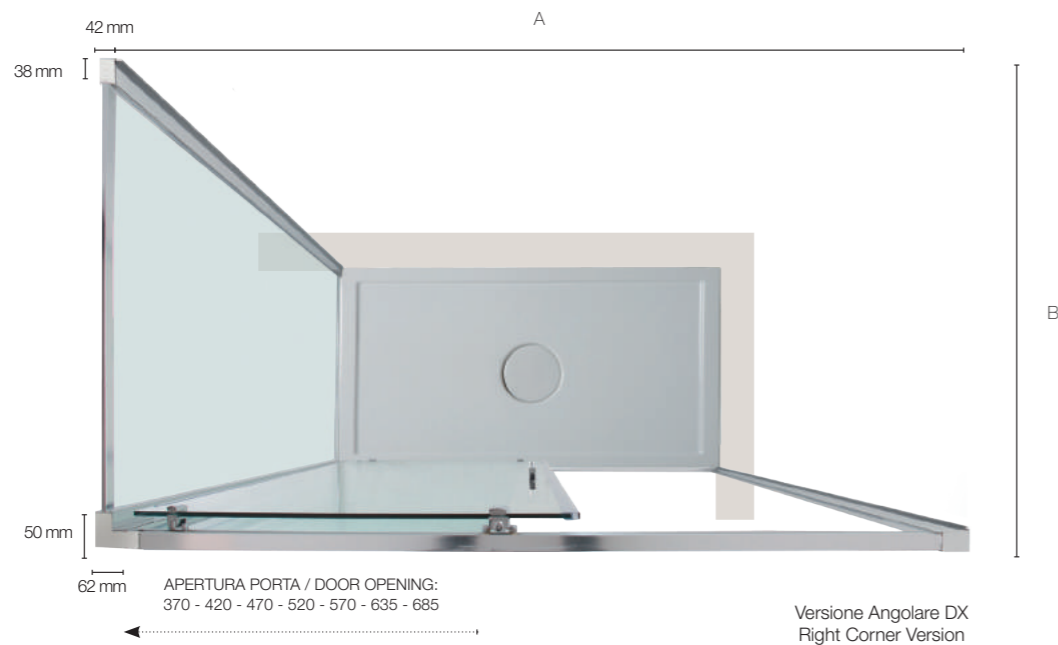
Cristallo Cincillà
Chinchilla glass



DIMENSIONI PORTA (A) (NICCHIA) DOOR SIZES (A) (NICHE)

Specifiche tecniche / Technical specifications				
L/W mm	H/H mm	Peso vetro kg Glass weight kgs	Apertura porta Door opening	Estensibilità mm Extension mm
1000	2000	35	370	950-1000
1100	2000	38	420	1050-1100
1200	2000	40	470	1150-1200
1300	2000	43	520	1250-1300
1400	2000	46	570	1350-1400

Specifiche tecniche / Technical specifications				
L/W mm	H/H mm	Peso vetro kg Glass weight kgs	Apertura porta Door opening	Estensibilità mm Extension mm
1500	2000	50	635	1450-1500
1600	2000	53	685	1550-1600
1700	2000	56	685	1650-1700
1800	2000	59	685	1750-1800

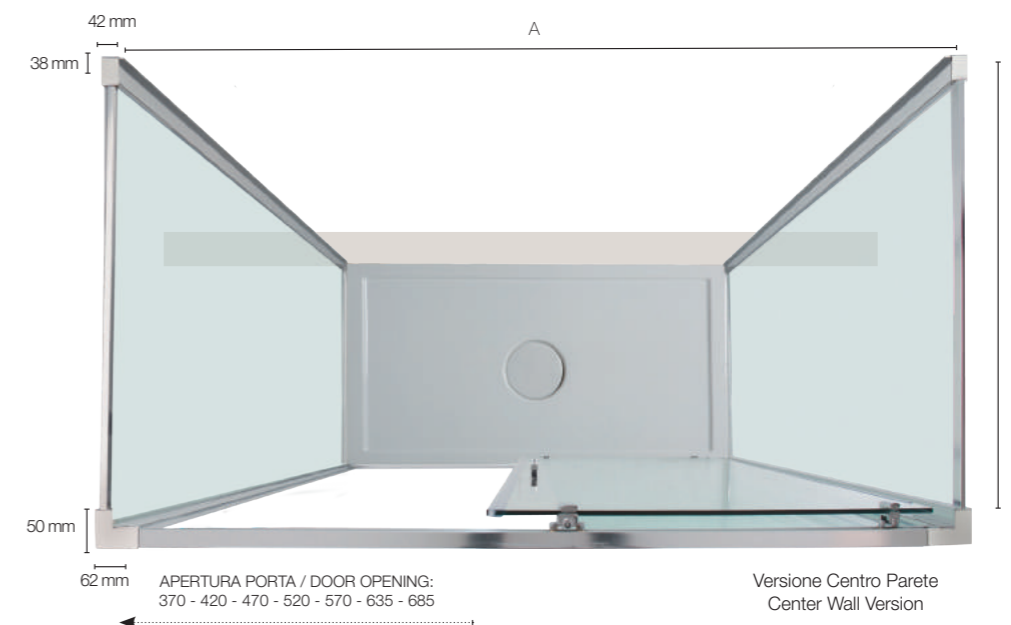


PORTA ABBINATA A LATO FISSO DOOR MATCHED WITH FIXED PANEL

Specifiche tecniche / Technical specifications		
P/D mm	H/H mm	Estensibilità mm Extension mm
1000	2000	962-1010
1100	2000	1062-1110
1200	2000	1162-1210
1300	2000	1262-1310
1400	2000	1362-1410
1500	2000	1462-1510
1600	2000	1562-1610
1700	2000	1662-1710
1800	2000	1762-1810

DIMENSIONI LATO FISSO (B) FISSO FIXED SIDE PANEL SIZE (B) FISSO

Specifiche tecniche / Technical specifications			
P/D mm	H/H mm	Peso vetro kg Glass weight kgs	Estensibilità mm Extension mm
700	2000	24	665-715
800	2000	27	765-815
900	2000	30	865-915
1000	2000	34	965-1015



PORTA ABBINATA A 2 LATI FISSI DOOR MATCHED WITH 2 FIXED PANELS

Specifiche tecniche / Technical specifications		
P/D mm	H/H mm	Estensibilità mm Extension mm
1000	2000	974-1020
1100	2000	1074-1120
1200	2000	1174-1220
1300	2000	1274-1320
1400	2000	1374-1420

Specifiche tecniche / Technical specifications		
P/D mm	H/H mm	Estensibilità mm Extension mm
1500	2000	1474-1520
1600	2000	1574-1620
1700	2000	1674-1720
1800	2000	1774-1820