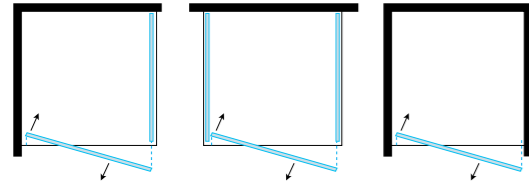


# FPB40

Porta battente / Hinge door H 2000 mm

NELLA FPB40 LA PORTA CHE MISURA MM 700, 800 E 900 HA L'APERTURA AD ANTA UNICA.

THE FPB40 DOOR MEASURES 700, 800 OR 900 AND IS AVAILABLE WITH SINGLE DOOR OPENING ONLY.

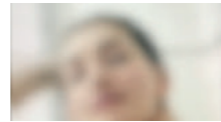


VERSIONE: ANGOLARE, CENTRO PARETE E NICCHIA

VERSION: CORNER, CENTER WALL AND NICHE



Cristallo trasparente  
Transparent glass



Cristallo satinato  
Frosted glass



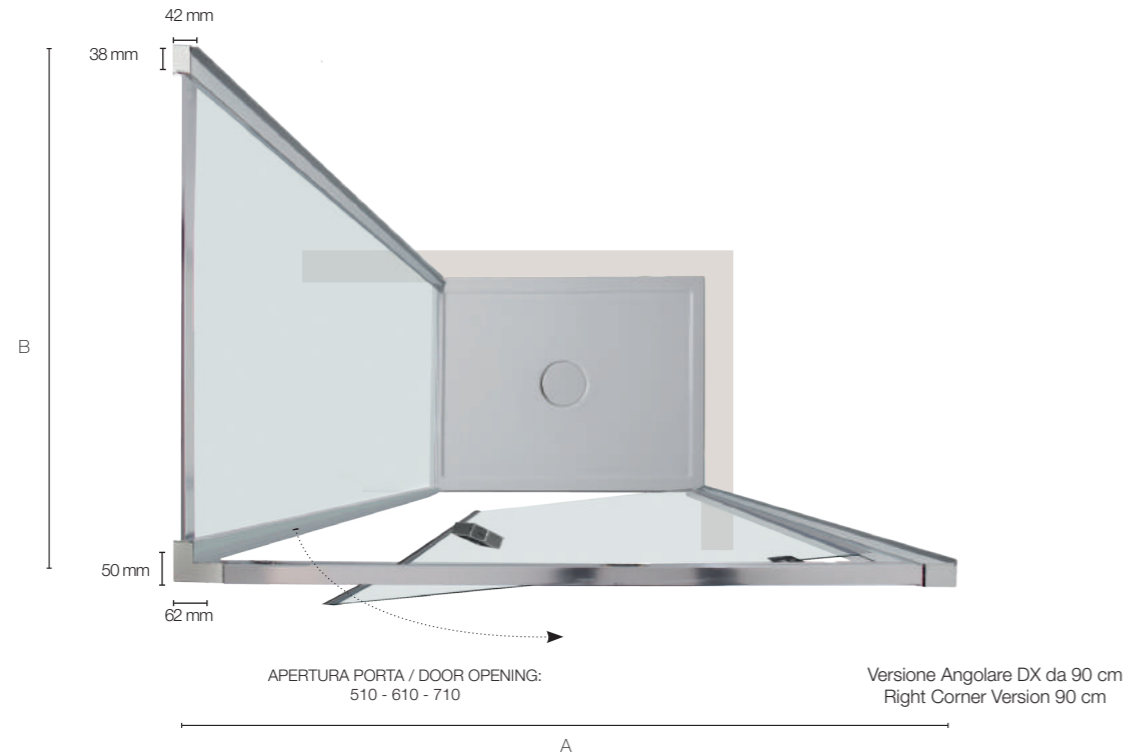
Cristallo Cincillà  
Chinchilla glass



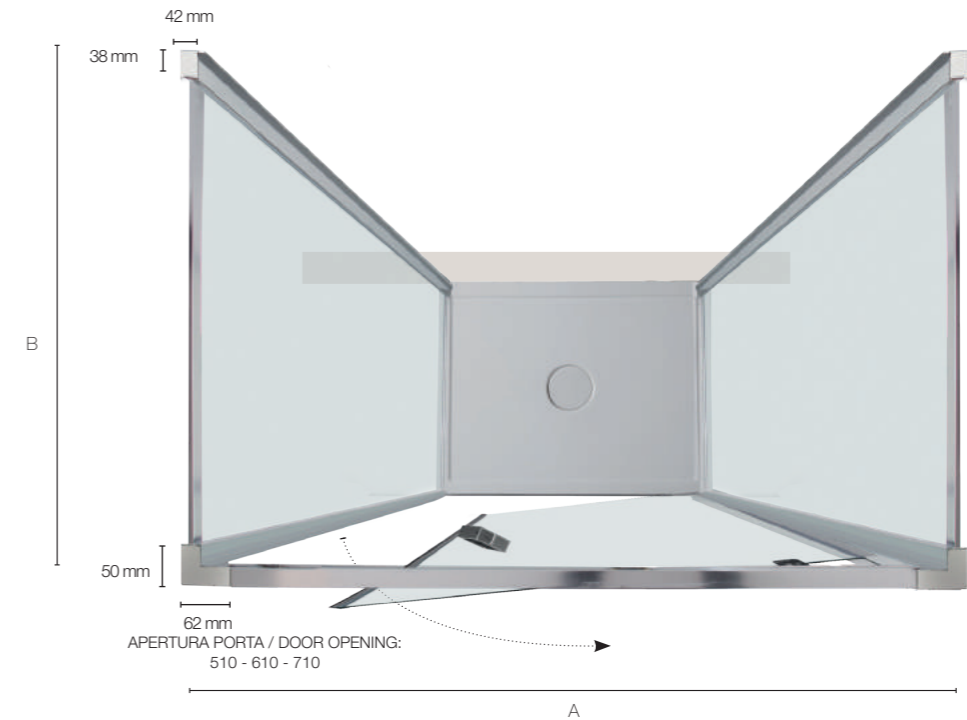
Versione Nicchia  
Niche Version

## DIMENSIONI PORTA (A) (NICCHIA) DOOR SIZES (A) (NICHE)

Specifiche tecniche / Technical specifications				
L/W mm	H/H mm	Peso vetro kg	Apertura porta	Estensibilità mm
		Glass weight kgs	Door opening	Extension mm
700	2000	24	510	650-700
800	2000	28	610	750-800
900	2000	30	710	850-900



Versione Angolare DX da 90 cm  
Right Corner Version 90 cm



Versione Centro Parete  
Center Wall Version

## PORTA ABBINATA A LATO FISSO DOOR MATCHED WITH FIXED PANEL

Specifiche tecniche / Technical specifications		
P/D mm	H/H mm	Estensibilità mm Extension mm
700	2000	662-710
800	2000	762-810
900	2000	862-910

## DIMENSIONI LATO FISSO (B) FISSO FIXED SIDE PANEL SIZE (B) FISSO

Specifiche tecniche / Technical specifications			
P/D mm	H/H mm	Peso vetro kg	Estensibilità mm
		Glass weight kgs	Extension mm
700	2000	24	665-715
800	2000	27	765-815
900	2000	30	865-915
1000	2000	34	965-1015

## PORTA ABBINATA A 2 LATI FISSI DOOR MATCHED WITH 2 FIXED PANELS

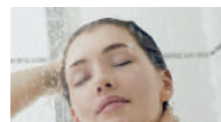
Specifiche tecniche / Technical specifications		
P/D mm	H/H mm	Estensibilità mm Extension mm
700	2000	674-720
800	2000	774-820
900	2000	874-920

# FPB40

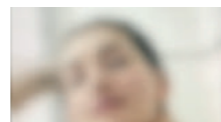
Porta battente / Hinge door H 2000 mm

NELLA FPB40 LA PORTA CHE MISURA MM 1000, 1100 E 1200 HA IL DOPPIO VETRO SIA ESSA POSIZIONATA ANGOLARE O A NICCHIA.

THE FPB40 DOORS THAT MEASURE MM 1000, 1100 AND 1200 HAS DOUBLE GLASS WHETHER IT IS POSITIONED IN A NICHE OR CORNER INSTALLATION.



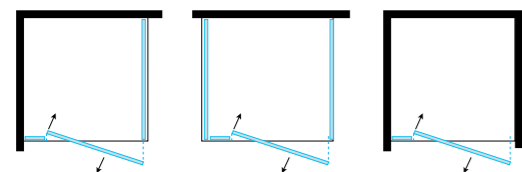
Cristallo trasparente  
Transparent glass



Cristallo satinato  
Frosted glass

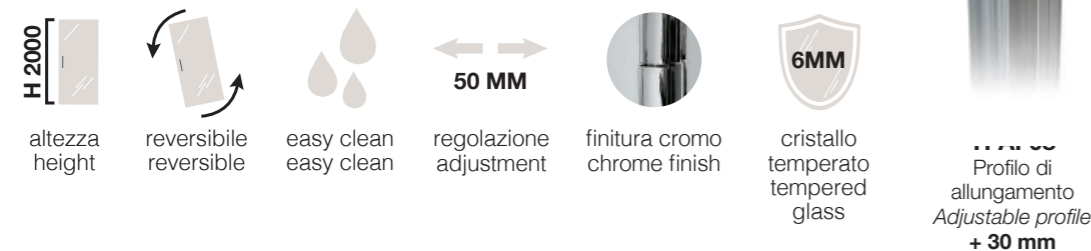


Cristallo Cincillà  
Chinchilla glass



VERSIONE: ANGOLARE,  
CENTRO PARETE E NICCHIA

VERSION: CORNER,  
CENTER WALL AND NICHE

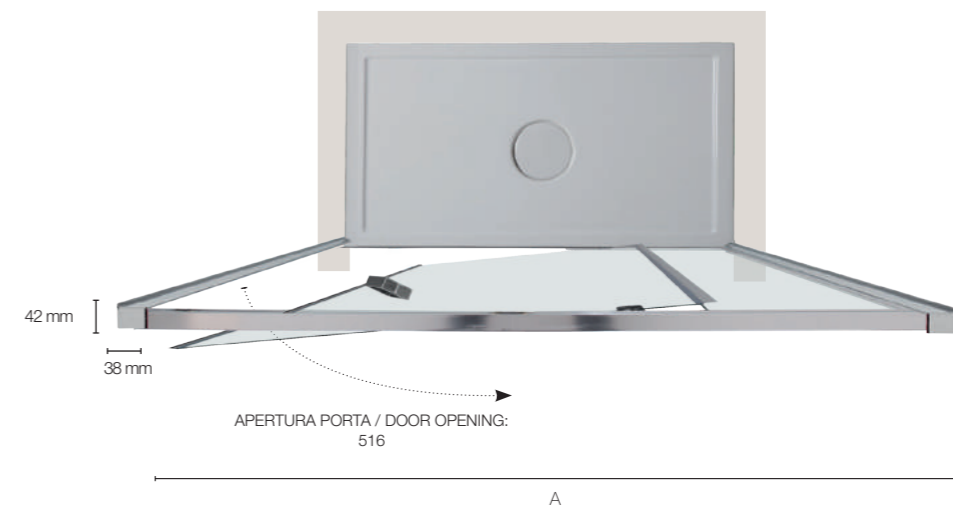


altezza height  
reversibile reversible  
easy clean easy clean  
regolazione adjustment  
finitura cromo chrome finish



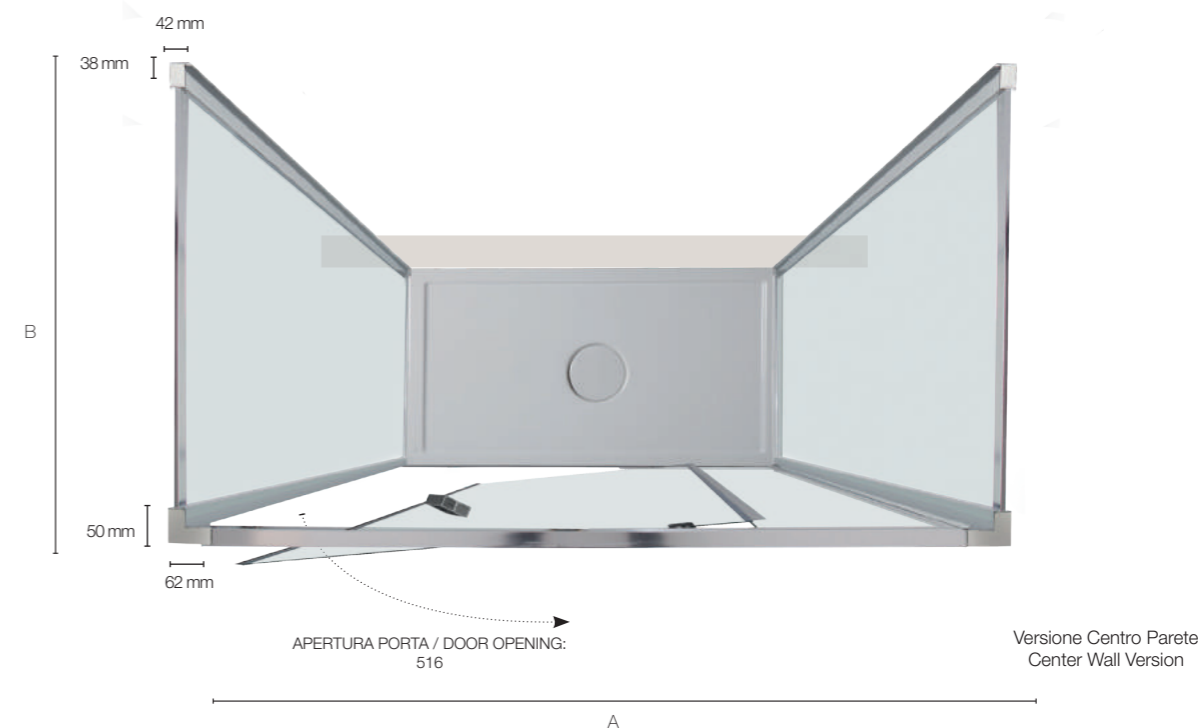
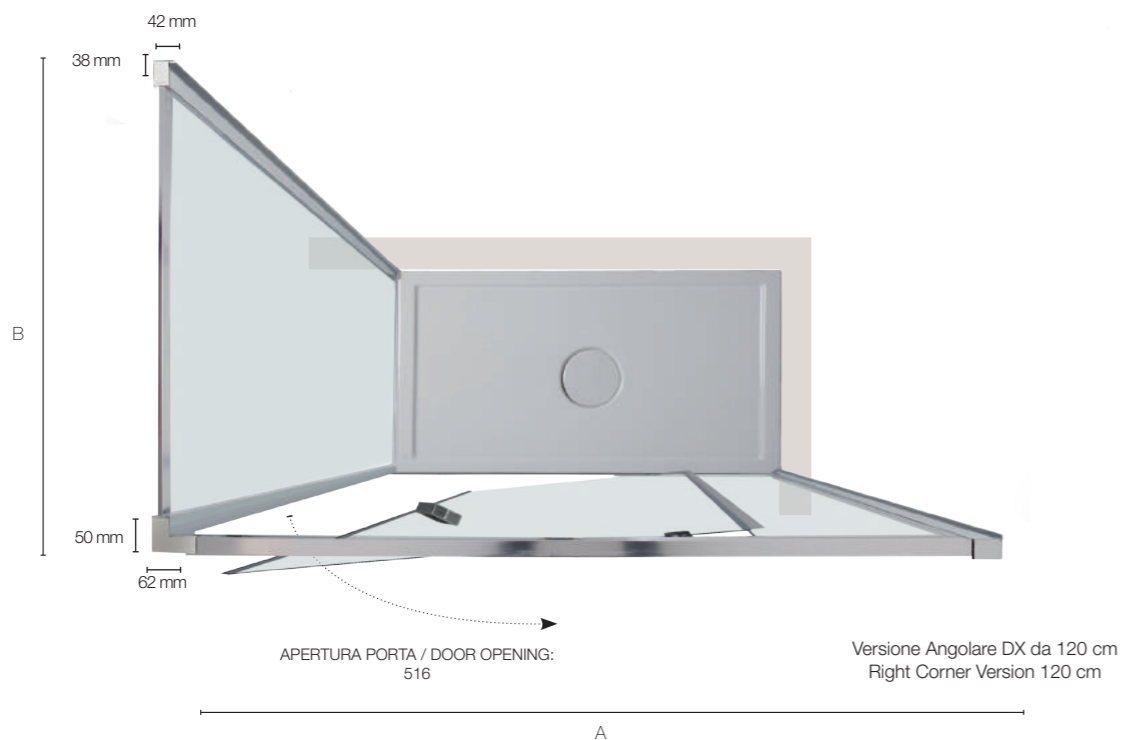
6MM  
cristallo temperato  
tempered glass

1177 33  
Profilo di allungamento  
Adjustable profile  
+ 30 mm



**DIMENSIONI PORTA (A) (NICCHIA)**  
DOOR SIZES (A) (NICHE)

Specifiche tecniche / Technical specifications				
L/W mm	H/H mm	Peso vetro kg	Apertura porta	Estensibilità mm
		Glass weight kgs	Door opening	Extension mm
1000	2000	34	516	950-1000
1100	2000	36	516	1050-1100
1200	2000	40	516	1150-1200



**PORTA ABBINATA A LATO FISSO**  
DOOR MATCHED WITH FIXED PANEL

Specifiche tecniche / Technical specifications		
P/D mm	H/H mm	Estensibilità mm
		Extension mm
1000	2000	962-1010
1100	2000	1062-1110
1200	2000	1162-1210

**DIMENSIONI LATO FISSO (B) FISSO**  
FIXED SIDE PANEL SIZE (B) FISSO

Specifiche tecniche / Technical specifications			
P/D mm	H/H mm	Peso vetro kg	Estensibilità mm
		Glass weight kgs	Extension mm
700	2000	22	665-715
800	2000	26	765-815
900	2000	28	865-915
1000	2000	30	965-1015

**PORTA ABBINATA A 2 LATI FISSI**  
DOOR MATCHED WITH 2 FIXED PANELS

Specifiche tecniche / Technical specifications		
P/D mm	H/H mm	Estensibilità mm
		Extension mm
1000	2000	974-1020
1100	2000	1074-1120
1200	2000	1174-1220