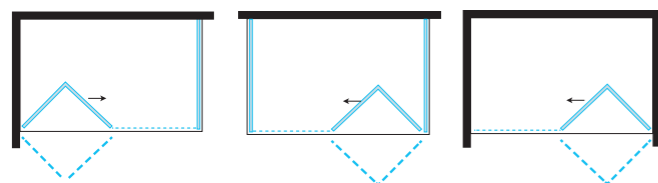


FPS30

Porta a soffietto / Folding door H 2000 mm



VERSIONE: ANGOLARE,
CENTRO PARETE E NICCHIA

VERSION: CORNER,
CENTER WALL AND NICHE



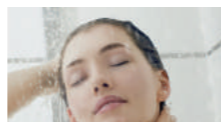
altezza height
reversibile reversible
easy clean easy clean
regolazione adjustment
finitura cromo chrome finish



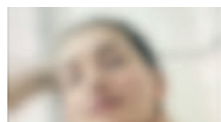
6MM
cristallo temperato
tempered glass



1171030
Profilo di allungamento
Adjustable profile
+ 30 mm



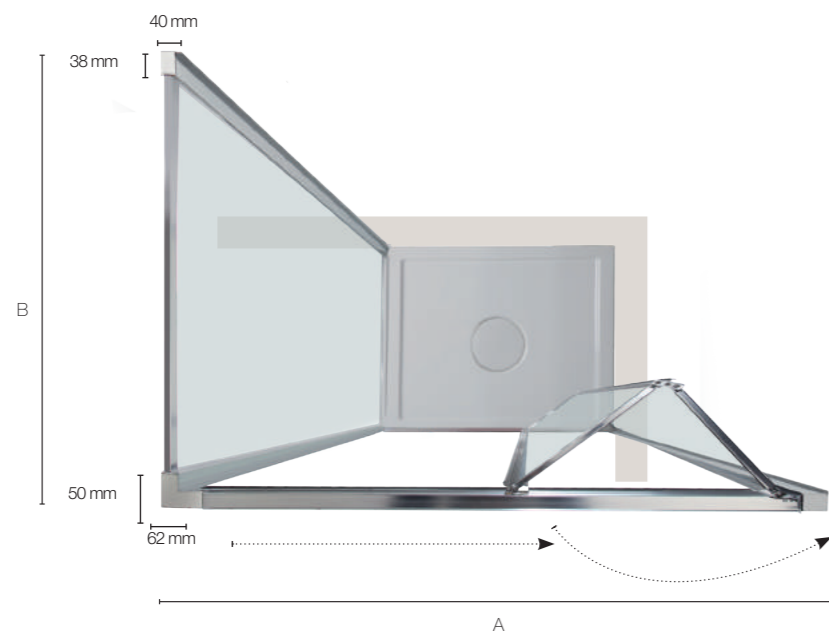
Cristallo trasparente
Transparent glass



Cristallo satinato
Frosted glass

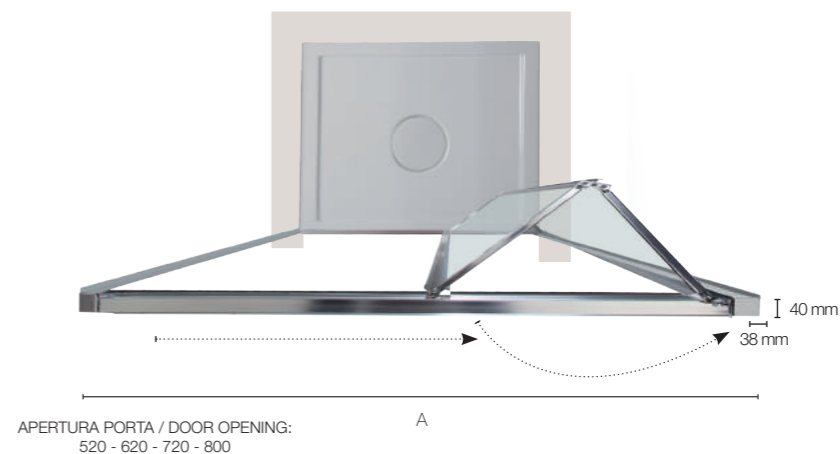


Cristallo Cincillà
Chinchilla glass



APERTURA PORTA / DOOR OPENING:
520 - 620 - 720 - 800

Versione Angolare DX
Right Corner Version

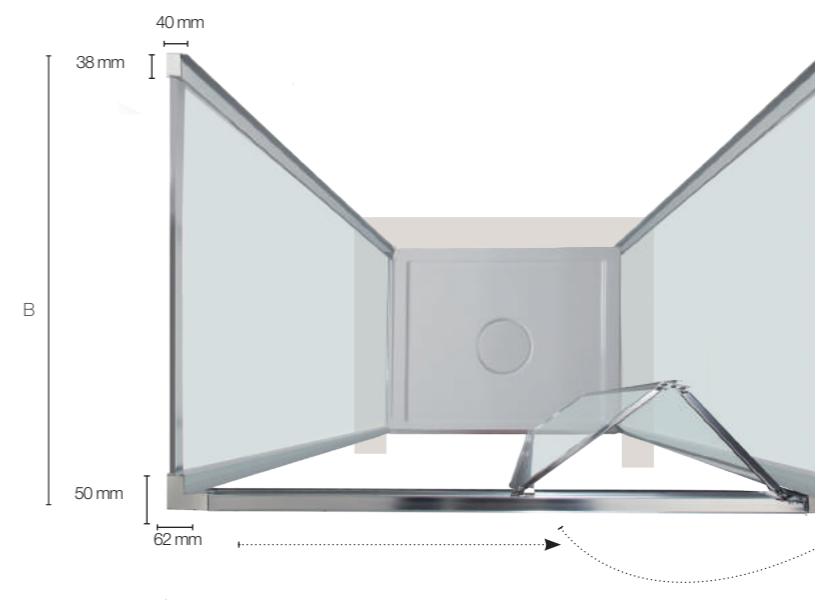


APERTURA PORTA / DOOR OPENING:
520 - 620 - 720 - 800

Versione Nicchia
Niche Version

DIMENSIONI PORTA (A) (NICCHIA) DOOR SIZES (A) (NICHE)

Specifiche tecniche / Technical specifications				
L/W mm	H/H mm	Peso vetro kg	Apertura porta	Estensibilità mm
		Glass weight kgs	Door opening	Extension mm
700	2000	26	520	650-700
800	2000	29	620	750-800
900	2000	32	720	850-900
1000	2000	35	800	950-1000



APERTURA PORTA / DOOR OPENING:
520 - 620 - 720 - 800

Versione Centro Parete
Center Wall Version

PORTA ABBINATA A LATO FISSO DOOR MATCHED WITH FIXED PANEL

Specifiche tecniche / Technical specifications		
P/D mm	H/H mm	Estensibilità mm
		Extension mm
700	2000	662-710
800	2000	762-810
900	2000	862-910
1000	2000	962-1010

DIMENSIONI LATO FISSO (B) FISSO FIXED SIDE PANEL SIZE (B) FISSO

Specifiche tecniche / Technical specifications			
P/D mm	H/H mm	Peso vetro kg	Estensibilità mm
		Glass weight kgs	Extension mm
700	2000	24	665-715
800	2000	27	765-815
900	2000	30	865-915
1000	2000	34	965-1015

PORTA ABBINATA A 2 LATI FISSI DOOR MATCHED WITH 2 FIXED PANELS

Specifiche tecniche / Technical specifications		
P/D mm	H/H mm	Estensibilità mm
		Extension mm
700	2000	674-720
800	2000	774-820
900	2000	874-920
1000	2000	974-1020